

Bio 112 Handout for Animals 2

This handout contains:

- Today's iClicker Questions
- Handouts for today's lecture

iClicker Question #17A - before lecture

Which of the following are true?

- A. All animals have a separate mouth and anus.
- B. All animals have a nervous system.
- C. All animals have their mouth at their "head" end.
- D. All of the above.
- E. None of the above.

iClicker Question #17B - after lecture

Which of the following statements are true?

- (A) The human digestive system has separate openings for input (mouth) and output (anus) while a gastrovascular cavity has only one opening.
- (B) Digestion of food occurs in the human digestive system; in a gastrovascular cavity, there is no digestion.

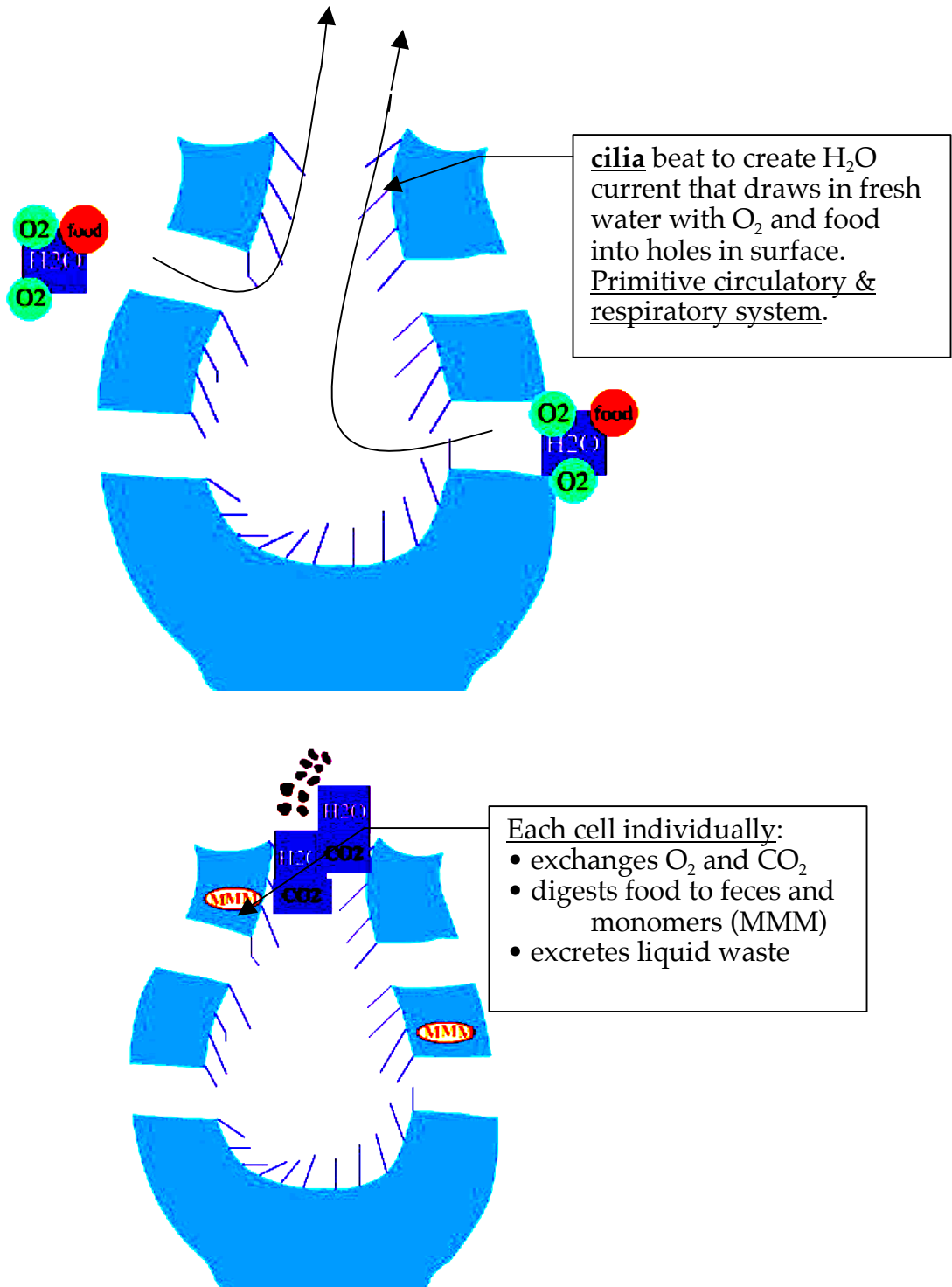
- (A) (B)
- A. True True
 - B. True False
 - C. False True
 - D. False False
 - E. I don't know.

Beaming in your answers

1. Figure out your answer and select the appropriate letter (A-E).
2. Turn on your iClicker by pressing the "ON/OFF" button; the blue "POWER" light should come on. If the red "LOW BATTERY" light comes on, you should replace your batteries soon.
3. Transmit your answer as follows:
 - a. Press the button corresponding to the answer you've selected (A thru E).
 - b. The "STATUS" light will flash green to indicate that your answer has been received. If the "STATUS" light flashed red, your answer was not received; you should re-send it until you get a green "STATUS" light.

Bio 112 Sponges

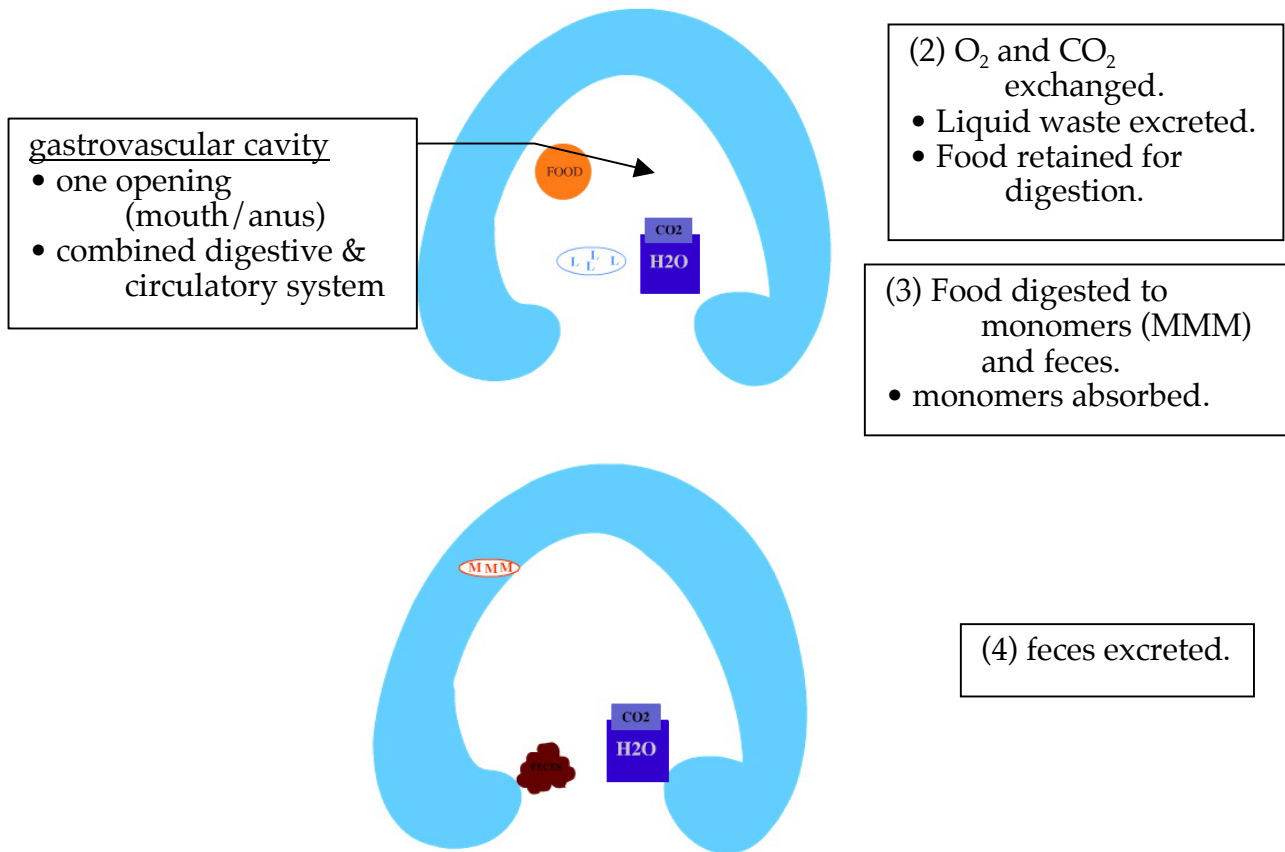
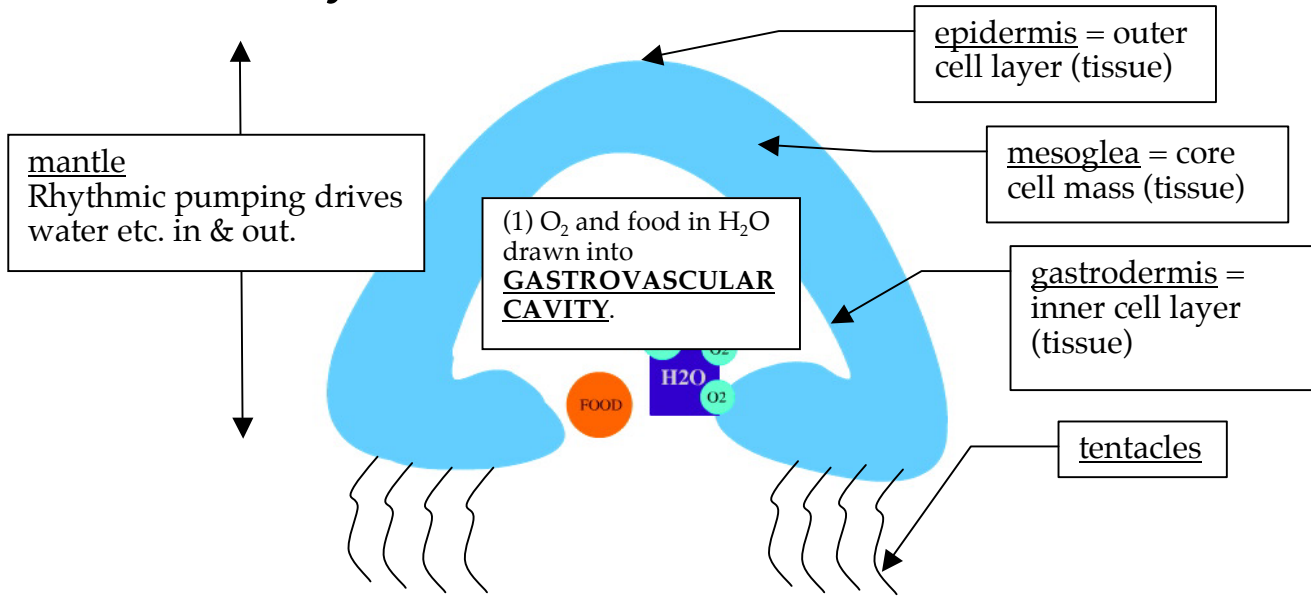
(cross section)



Thanks to Evelyne Tschibelu for making the animation.

Bio 112 Jellyfish

(cross section of **medusa** form)



Thanks to Evelyne Tschibelu for making the animation.

Animals 2 - 4

Brian White Ph.D. © 2011



ocw.umb.edu